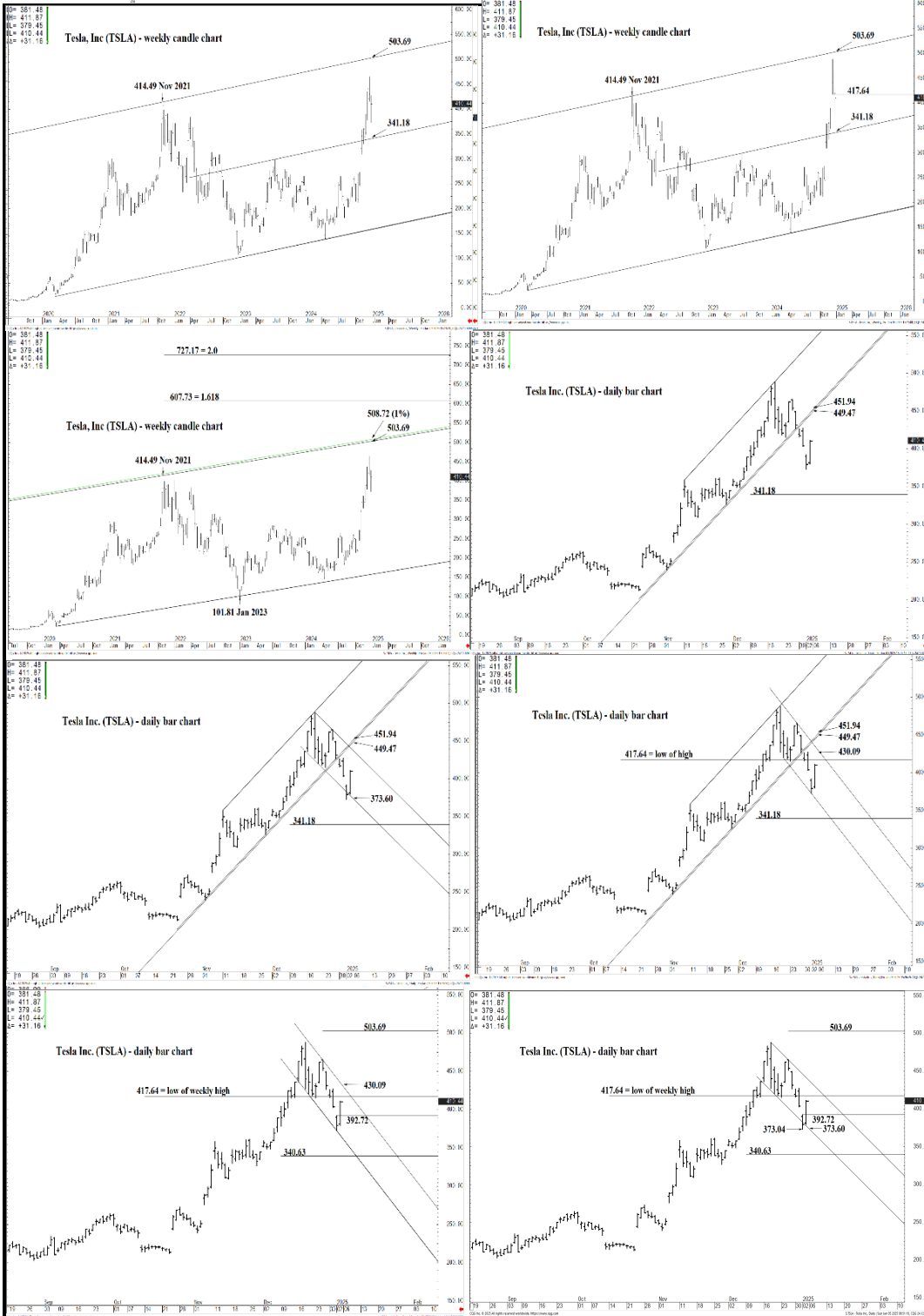




WICKED STOCKS

DIRECTIONAL CLARITY FOR THE ACTIVE INVESTOR



Support and Resistance

- 451.94** * session containment
- 449.47 * minor
- 444.41 * minor
- 440.13 * minor
- 435.96 * minor
- 430.09** *** weekly containment UP
- 427.01 * minor
- 421.06 * minor
- 417.64 * intra-day containment
- 411.87 * minor
- 407.52 * minor
- 402.54 * minor
- 392.72 * intra-day containment
- 385.00 * minor
- 379.28 * minor
- 373.60** * session containment
- 369.49 * minor
- 361.93 * minor
- 355.69 * minor
- 351.80 * minor
- 345.45 * minor
- 341.18** **** multi-week contain

O= 381.48
 H= 411.87
 L= 379.45
 L= 410.44
 Δ= +31.16

Tesla, Inc (TSLA) - weekly candle chart



Support and Resistance

- 451.94 * session containment**
- 449.47 * minor
- 444.41 * minor
- 440.13 * minor
- 435.96 * minor
- 430.09 *** weekly containment UP**
- 427.01 * minor
- 421.06 * minor
- 417.64 * intra-day containment
- 411.87 * minor
- 407.52 * minor
- 402.54 * minor
- 392.72 * intra-day containment
- 385.00 * minor
- 379.28 * minor
- 373.60 * session containment**
- 369.49 * minor
- 361.93 * minor
- 355.69 * minor
- 351.80 * minor
- 345.45 * minor
- 341.18 ***** multi-week contain**



O= 381.48
 H= 411.87
 L= 379.45
 L= 410.44
 Δ= +31.16

Tesla, Inc (TSLA) - weekly candle chart



Support and Resistance

- 451.94 * session containment**
- 449.47 * minor
- 444.41 * minor
- 440.13 * minor
- 435.96 * minor
- 430.09 *** weekly containment UP**
- 427.01 * minor
- 421.06 * minor
- 417.64 * intra-day containment
- 411.87 * minor
- 407.52 * minor
- 402.54 * minor
- 392.72 * intra-day containment
- 385.00 * minor
- 379.28 * minor
- 373.60 * session containment**
- 369.49 * minor
- 361.93 * minor
- 355.69 * minor
- 351.80 * minor
- 345.45 * minor
- 341.18 **** multi-week contain**



O= 381.48
 H= 411.87
 L= 379.45
 C= 410.44
 Δ= +31.16

727.17 = 2.0

607.73 = 1.618

Tesla, Inc (TSLA) - weekly candle chart



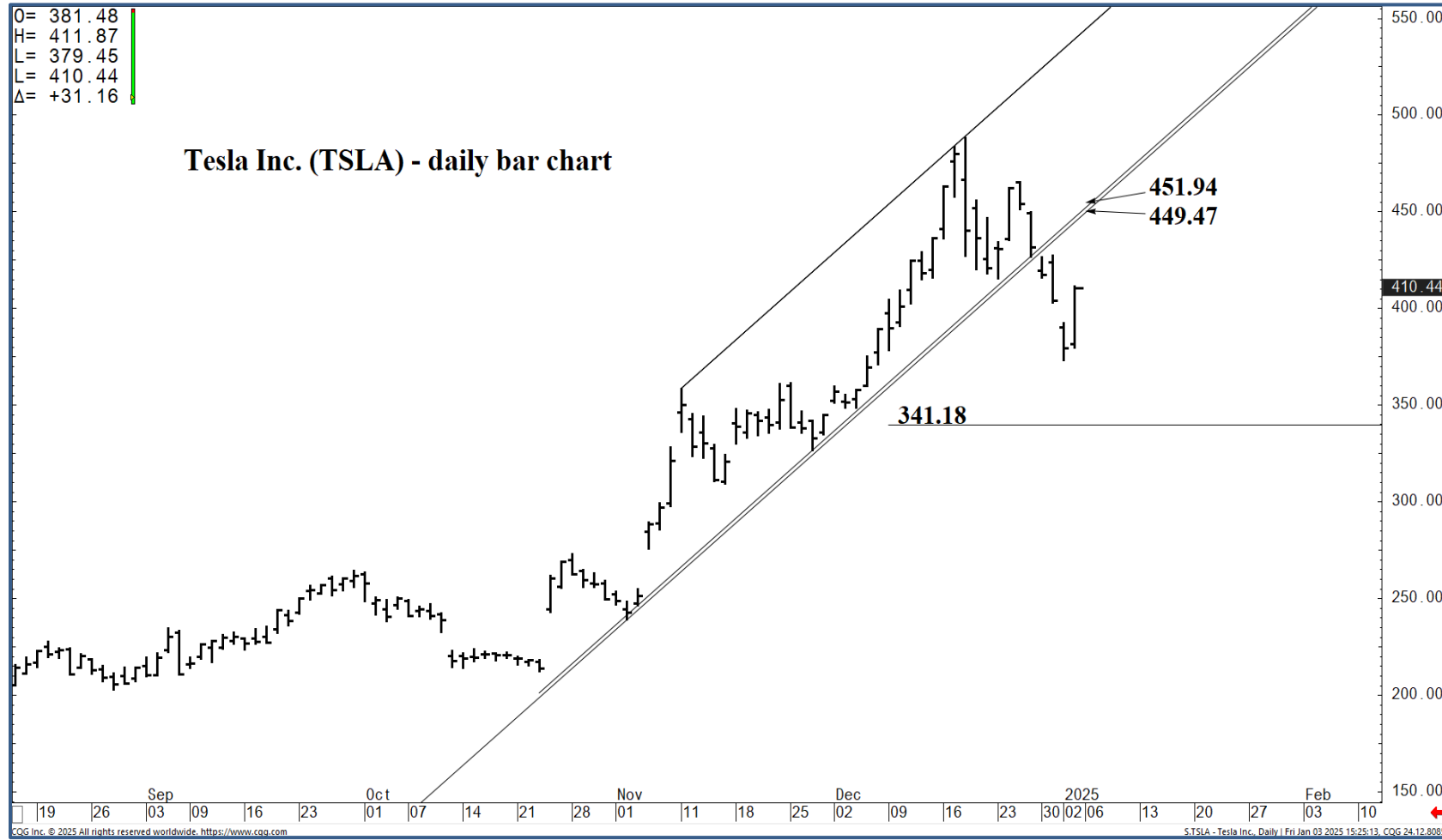
Support and Resistance

- 451.94 * session containment**
- 449.47 * minor
- 444.41 * minor
- 440.13 * minor
- 435.96 * minor
- 430.09 *** weekly containment UP**
- 427.01 * minor
- 421.06 * minor
- 417.64 * intra-day containment
- 411.87 * minor
- 407.52 * minor
- 402.54 * minor
- 392.72 * intra-day containment
- 385.00 * minor
- 379.28 * minor
- 373.60 * session containment**
- 369.49 * minor
- 361.93 * minor
- 355.69 * minor
- 351.80 * minor
- 345.45 * minor
- 341.18 **** multi-week contain**



O= 381.48
H= 411.87
L= 379.45
L= 410.44
Δ= +31.16

Tesla Inc. (TSLA) - daily bar chart



Support and Resistance

- 451.94 * session containment**
- 449.47 * minor
- 444.41 * minor
- 440.13 * minor
- 435.96 * minor
- 430.09 *** weekly containment UP**
- 410.44
- 427.01 * minor
- 421.06 * minor
- 417.64 * intra-day containment
- 411.87 * minor
- 407.52 * minor
- 402.54 * minor
- 392.72 * intra-day containment
- 385.00 * minor
- 379.28 * minor
- 373.60 * session containment**
- 369.49 * minor
- 361.93 * minor
- 355.69 * minor
- 351.80 * minor
- 345.45 * minor
- 341.18 **** multi-week contain**



O= 381.48
 H= 411.87
 L= 379.45
 L= 410.44
 Δ= +31.16

Tesla Inc. (TSLA) - daily bar chart



Support and Resistance

451.94 * session containment

- 449.47 * minor
- 444.41 * minor
- 440.13 * minor
- 435.96 * minor

430.09 * weekly containment UP**

- 427.01 * minor
- 421.06 * minor
- 417.64 * intra-day containment
- 411.87 * minor
- 407.52 * minor
- 402.54 * minor
- 392.72 * intra-day containment
- 385.00 * minor
- 379.28 * minor

373.60 * session containment

- 369.49 * minor
- 361.93 * minor
- 355.69 * minor
- 351.80 * minor
- 345.45 * minor

341.18 *** multi-week contain**



O= 381.48
 H= 411.87
 L= 379.45
 L= 410.44
 Δ= +31.16

Tesla Inc. (TSLA) - daily bar chart



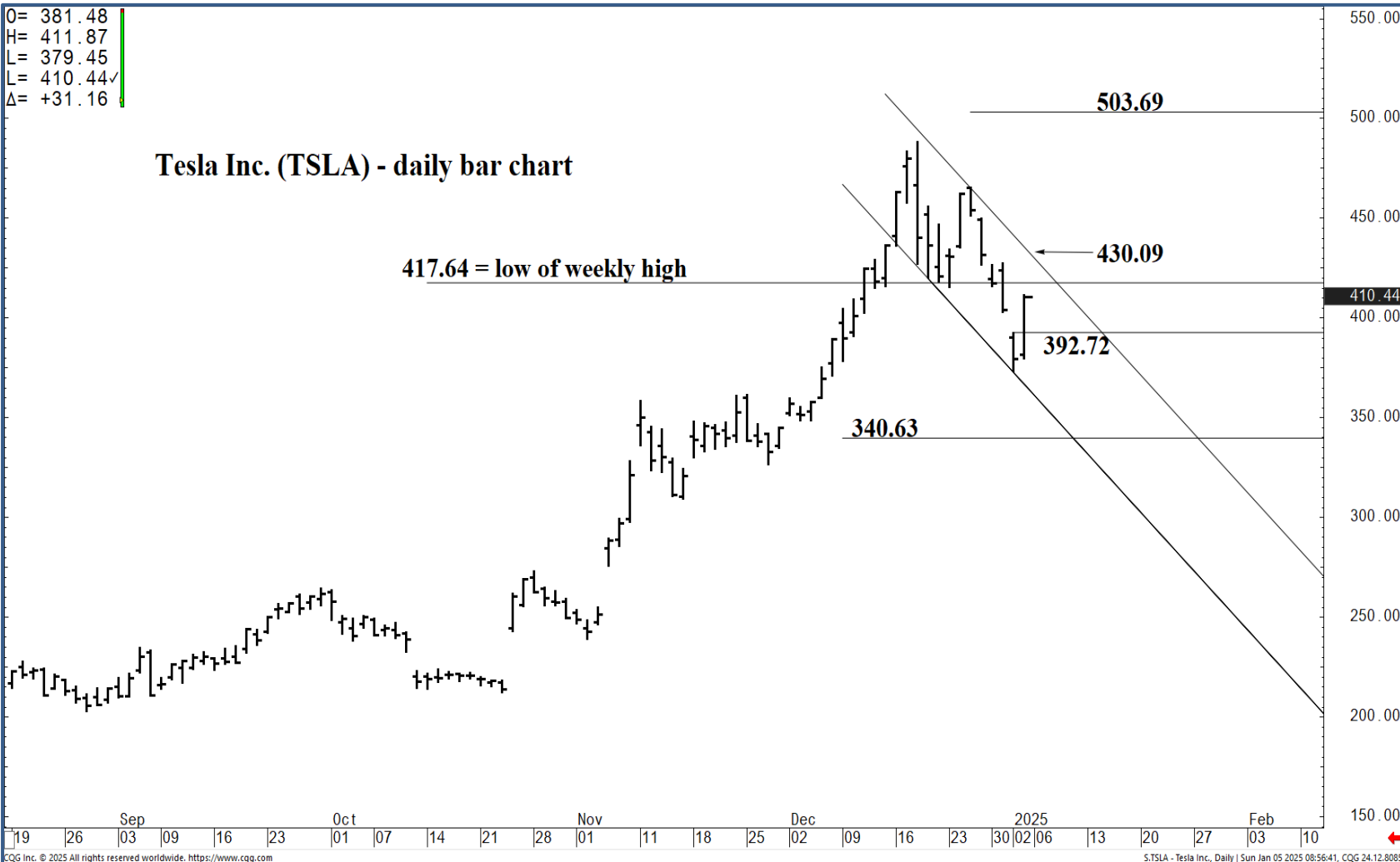
Support and Resistance

- 451.94 * session containment**
- 449.47 * minor
- 444.41 * minor
- 440.13 * minor
- 435.96 * minor
- 430.09 *** weekly containment UP**
- 427.01 * minor
- 421.06 * minor
- 417.64 * intra-day containment
- 411.87 * minor
- 407.52 * minor
- 402.54 * minor
- 392.72 * intra-day containment
- 385.00 * minor
- 379.28 * minor
- 373.60 * session containment**
- 369.49 * minor
- 361.93 * minor
- 355.69 * minor
- 351.80 * minor
- 345.45 * minor
- 341.18 ***** multi-week contain**



O= 381.48
 H= 411.87
 L= 379.45
 L= 410.44✓
 Δ= +31.16

Tesla Inc. (TSLA) - daily bar chart



Support and Resistance

- 451.94 * session containment**
- 449.47 * minor
- 444.41 * minor
- 440.13 * minor
- 435.96 * minor
- 430.09 *** weekly containment UP**
- 427.01 * minor
- 421.06 * minor
- 417.64 * intra-day containment
- 411.87 * minor
- 407.52 * minor
- 402.54 * minor
- 392.72 * intra-day containment
- 385.00 * minor
- 379.28 * minor
- 373.60 * session containment**
- 369.49 * minor
- 361.93 * minor
- 355.69 * minor
- 351.80 * minor
- 345.45 * minor
- 341.18 ***** multi-week contain**

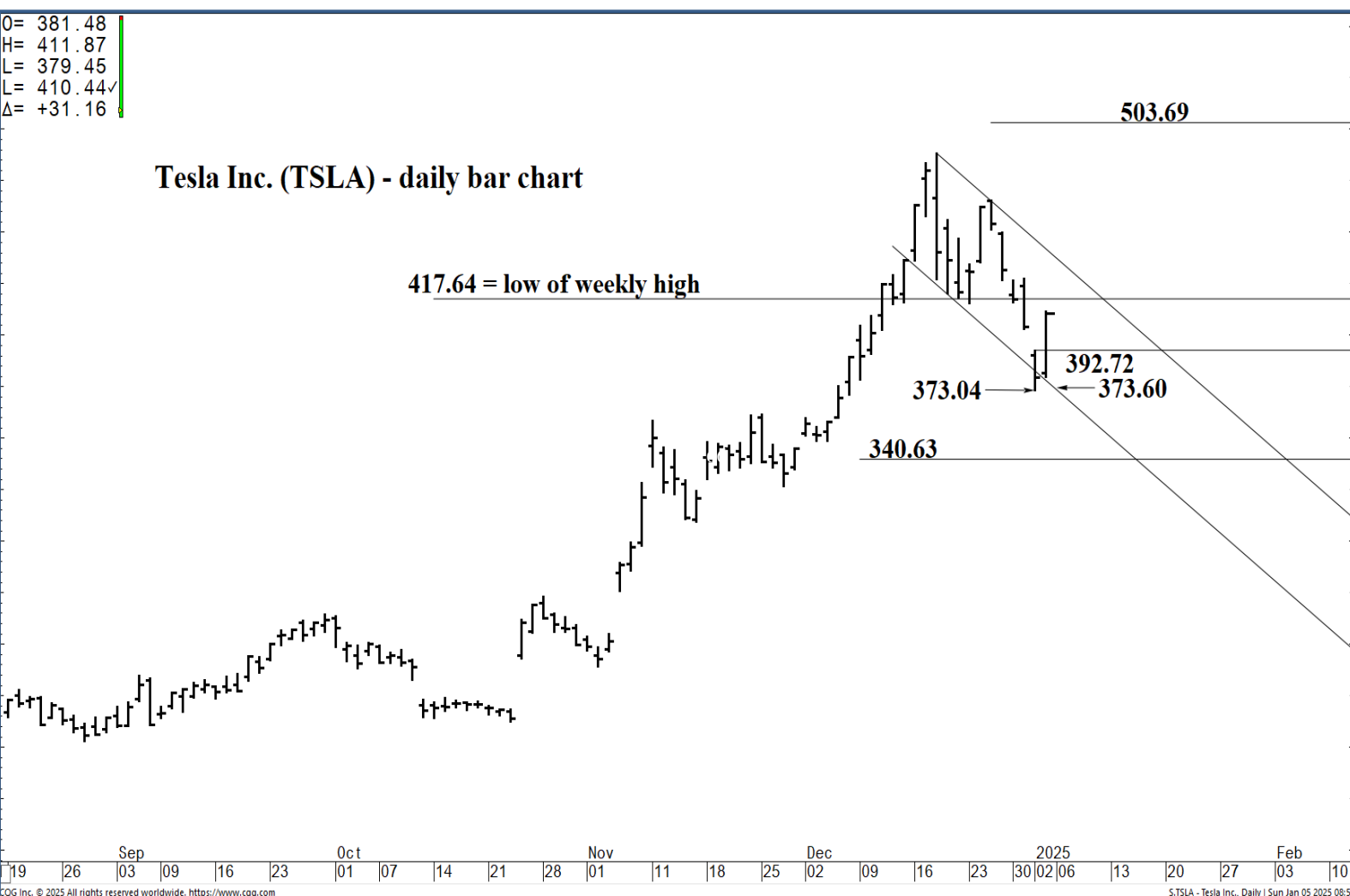
Sep 19 26 03 09 16 23 01 07 14 21 28 01 11 18 25 02 09 16 23 30 2025 02 06 13 20 27 03 10 Feb

CGQ Inc. © 2025 All rights reserved worldwide. <https://www.cgq.com> S.TSLA - Tesla Inc., Daily | Sun Jan 05 2025 08:56:41, CGQ 24.12.8088



O= 381.48
 H= 411.87
 L= 379.45
 L= 410.44✓
 Δ= +31.16

Tesla Inc. (TSLA) - daily bar chart



Support and Resistance

- 451.94 * session containment**
- 449.47 * minor
- 444.41 * minor
- 440.13 * minor
- 435.96 * minor
- 430.09 *** weekly containment UP**
- 427.01 * minor
- 421.06 * minor
- 417.64 * intra-day containment
- 411.87 * minor
- 407.52 * minor
- 402.54 * minor
- 392.72 * intra-day containment
- 385.00 * minor
- 379.28 * minor
- 373.60 * session containment**
- 369.49 * minor
- 361.93 * minor
- 355.69 * minor
- 351.80 * minor
- 345.45 * minor
- 341.18 **** multi-week contain**

Sep 19 26 03 09 16 23 01 07 14 21 28 01 11 18 25 02 09 16 23 30 2025 02 06 13 20 27 03 10

CGI Inc. © 2025 All rights reserved worldwide. <https://www.cqi.com>

S:TSLA - Tesla Inc., Daily | Sun Jan 05 2025 08:51:19, CGI 24.12.8088

