



# WICKED STOCKS

DIRECTIONAL CLARITY FOR THE ACTIVE INVESTOR



## Support and Resistance

**266.98** \*\*\*\* multi-wk contain UP  
**266.22** \*\*\*\* multi-wk contain

263.57 \* minor  
 261.63 \* minor  
 258.02 \* minor

**255.77** \* session containment

251.34 \* minor  
 248.14 \* minor  
 246.18 \* intra-day containment  
 244.48 \* minor  
 242.94 \* minor  
 240.67 \* minor

**236.61** \*\*\*\* multi-week contain

234.08 \* minor  
 230.09 \* minor  
 227.20 \* minor

**223.43** \* session containment

219.41 \* minor  
 216.27 \* minor

**213.65** \*\*\* weekly containment



**Support and Resistance**

- 266.98 \*\*\*\* multi-wk contain UP**
- 266.22 \*\*\*\* multi-wk contain**
- 263.57 \* minor
- 261.63 \* minor
- 258.02 \* minor
- 255.77 \* session containment**
- 251.34 \* minor
- 248.14 \* minor
- 246.18 \* intra-day containment
- 244.48 \* minor
- 242.94 \* minor
- 240.67 \* minor
- 236.61 \*\*\*\* multi-week contain**
- 234.08 \* minor
- 230.09 \* minor
- 227.20 \* minor
- 223.43 \* session containment**
- 219.41 \* minor
- 216.27 \* minor
- 213.65 \*\*\* weekly containment**



O= 244.48  
H= 249.79  
L= 237.81  
L= 240.67  
Δ= -8.35

# Tesla Inc. (TSLA) - weekly bar chart



## Support and Resistance

- 266.98 \*\*\*\* multi-wk contain UP**
- 266.22 \*\*\*\* multi-wk contain**
- 263.57 \* minor
- 261.63 \* minor
- 258.02 \* minor
- 255.77 \* session containment**
- 251.34 \* minor
- 248.14 \* minor
- 246.18 \* intra-day containment
- 244.48 \* minor
- 242.94 \* minor
- 240.67 \* minor
- 236.61 \*\*\*\* multi-week contain**
- 234.08 \* minor
- 230.09 \* minor
- 227.20 \* minor
- 223.43 \* session containment**
- 219.41 \* minor
- 216.27 \* minor
- 213.65 \*\*\*\* weekly containment**



O= 244.48  
 H= 249.79  
 L= 237.81  
 L= 240.67  
 Δ= -8.35

# Tesla (TSLA) - daily chart



## Support and Resistance

**266.98 \*\*\*\* multi-wk contain UP**  
**266.22 \*\*\*\* multi-wk contain**

263.57 \* minor  
 261.63 \* minor  
 258.02 \* minor

**255.77 \* session containment**

251.34 \* minor  
 248.14 \* minor  
 246.18 \* intra-day containment  
 244.48 \* minor  
 242.94 \* minor  
 240.67 \* minor

**236.61 \*\*\*\* multi-week contain**

234.08 \* minor  
 230.09 \* minor  
 227.20 \* minor

**223.43 \* session containment**

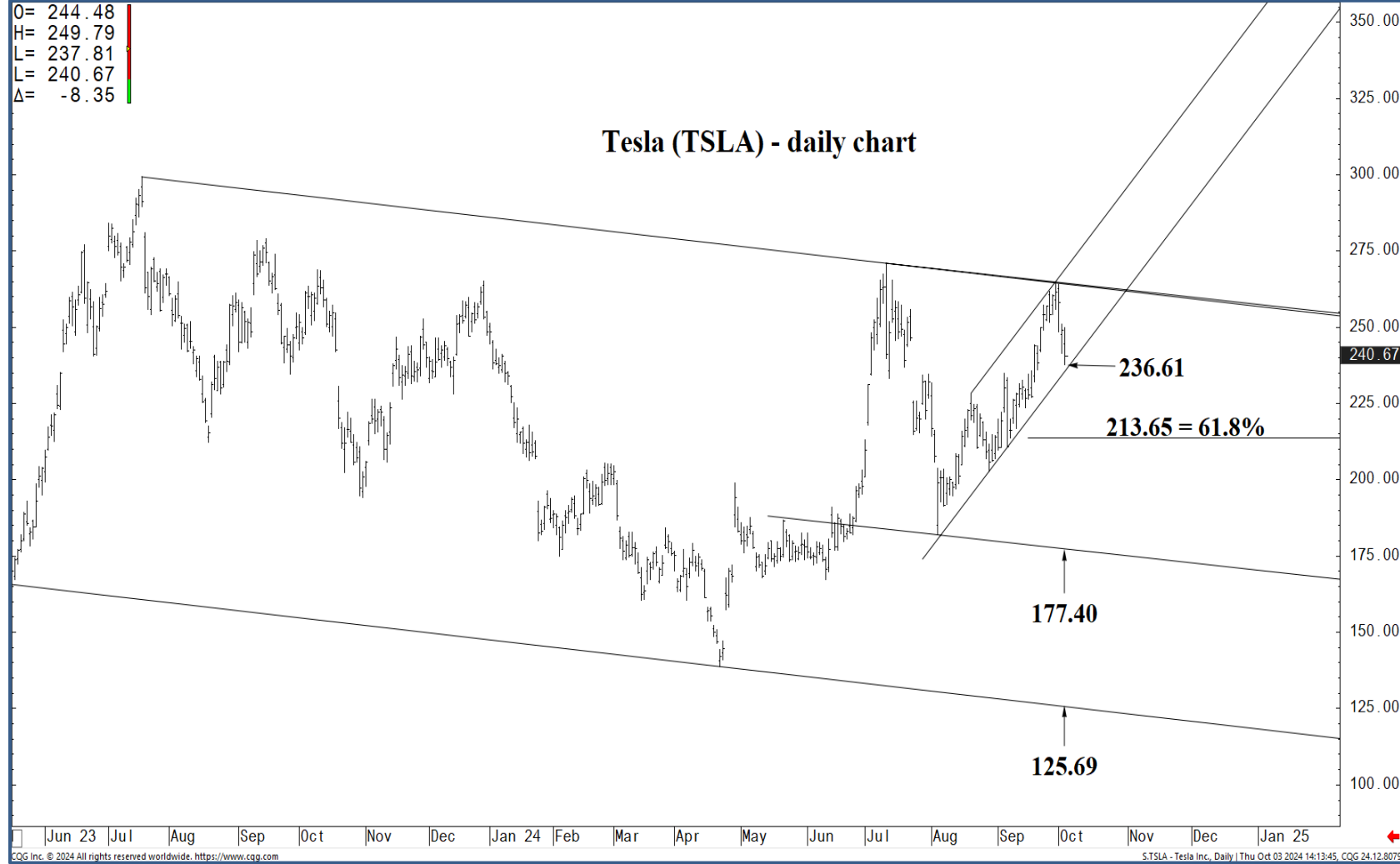
219.41 \* minor  
 216.27 \* minor

**213.65 \*\*\* weekly containment**



O= 244.48  
 H= 249.79  
 L= 237.81  
 L= 240.67  
 Δ= -8.35

### Tesla (TSLA) - daily chart



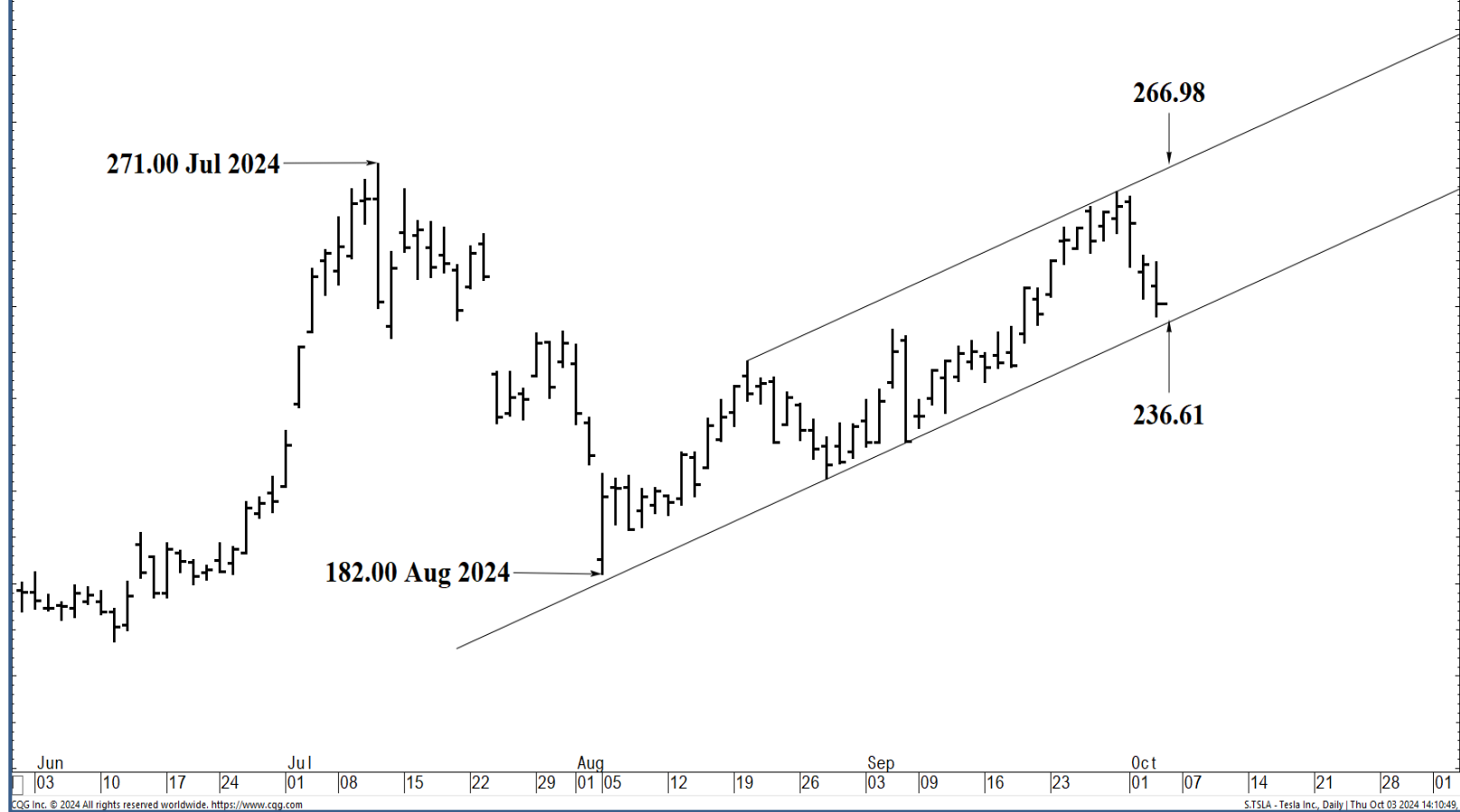
### Support and Resistance

- 266.98 \*\*\*\* multi-wk contain UP**
- 266.22 \*\*\*\* multi-wk contain**
  
- 263.57 \* minor
- 261.63 \* minor
- 258.02 \* minor
  
- 255.77 \* session containment**
  
- 251.34 \* minor
- 248.14 \* minor
- 246.18 \* intra-day containment
- 244.48 \* minor
- 242.94 \* minor
- 240.67 \* minor
  
- 236.61 \*\*\*\* multi-week contain**
  
- 234.08 \* minor
- 230.09 \* minor
- 227.20 \* minor
  
- 223.43 \* session containment**
  
- 219.41 \* minor
- 216.27 \* minor
  
- 213.65 \*\*\* weekly containment**



O= 244.48  
 H= 249.79  
 L= 237.81  
 L= 240.67  
 Δ= -8.35

### Tesla (TSLA) - daily chart



### Support and Resistance

- 266.98** \*\*\*\* multi-wk contain UP
- 266.22** \*\*\*\* multi-wk contain
- 263.57 \* minor
- 261.63 \* minor
- 258.02 \* minor
- 255.77** \* session containment
- 251.34 \* minor
- 248.14 \* minor
- 246.18 \* intra-day containment
- 244.48 \* minor
- 242.94 \* minor
- 240.67 \* minor
- 236.61** \*\*\*\* multi-week contain
- 234.08 \* minor
- 230.09 \* minor
- 227.20 \* minor
- 223.43** \* session containment
- 219.41 \* minor
- 216.27 \* minor
- 213.65** \*\*\* weekly containment



O= 244.48  
 H= 249.79  
 L= 237.81  
 C= 240.67  
 Δ= -8.35

**Tesla (TSLA) - daily chart**



**Support and Resistance**

**266.98 \*\*\*\* multi-wk contain UP**  
**266.22 \*\*\*\* multi-wk contain**

263.57 \* minor  
 261.63 \* minor  
 258.02 \* minor

**255.77 \* session containment**

251.34 \* minor  
 248.14 \* minor  
 246.18 \* intra-day containment  
 244.48 \* minor  
 242.94 \* minor  
 240.67 \* minor

**236.61 \*\*\*\* multi-week contain**

234.08 \* minor  
 230.09 \* minor  
 227.20 \* minor

**223.43 \* session containment**

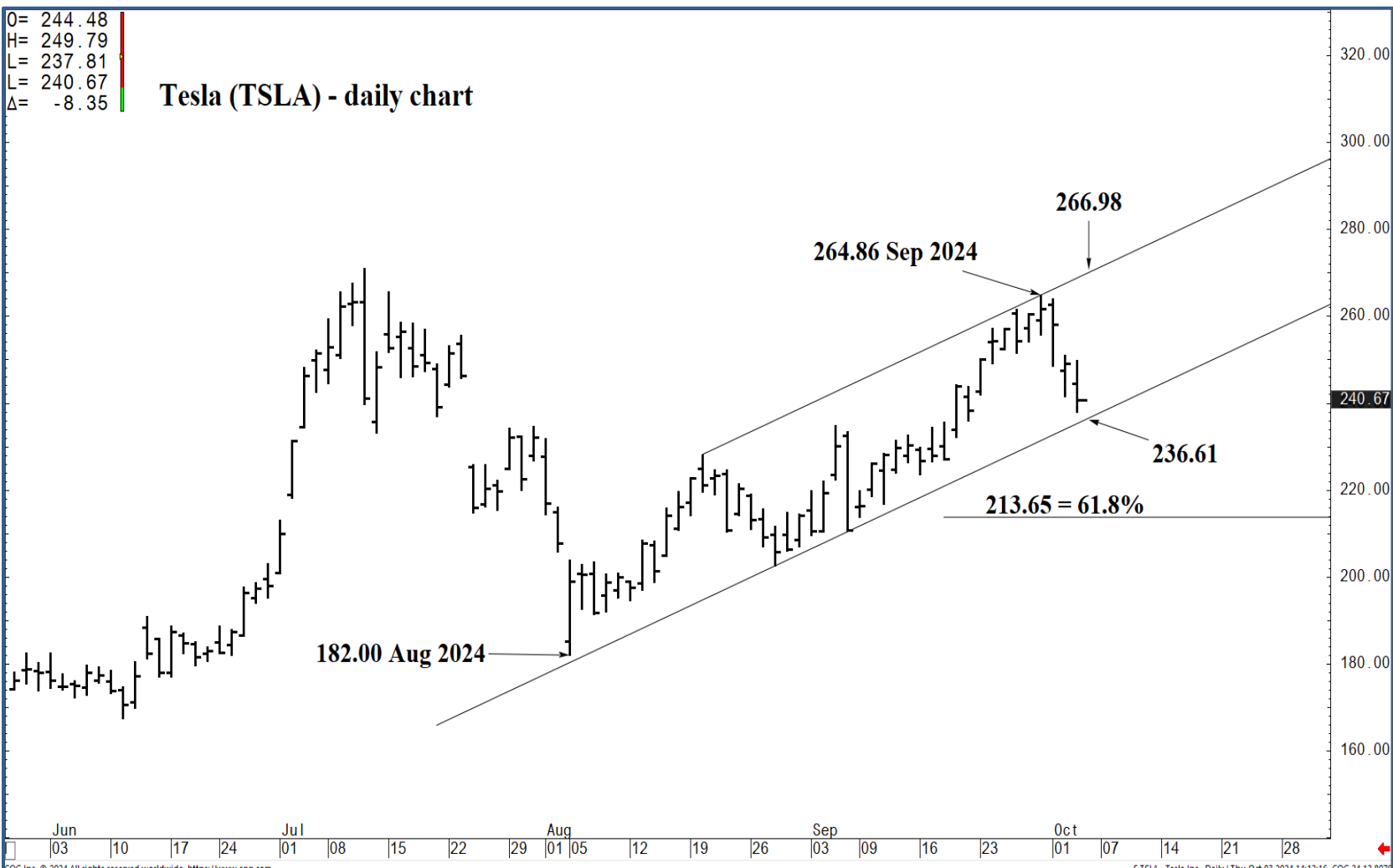
219.41 \* minor  
 216.27 \* minor

**213.65 \*\*\* weekly containment**



O= 244.48  
 H= 249.79  
 L= 237.81  
 L= 240.67  
 Δ= -8.35

# Tesla (TSLA) - daily chart



## Support and Resistance

- 266.98 \*\*\*\* multi-wk contain UP**
- 266.22 \*\*\*\* multi-wk contain**
- 263.57 \* minor
- 261.63 \* minor
- 258.02 \* minor
- 255.77 \* session containment**
- 251.34 \* minor
- 248.14 \* minor
- 246.18 \* intra-day containment
- 244.48 \* minor
- 242.94 \* minor
- 240.67 \* minor
- 236.61 \*\*\*\* multi-week contain**
- 234.08 \* minor
- 230.09 \* minor
- 227.20 \* minor
- 223.43 \* session containment**
- 219.41 \* minor
- 216.27 \* minor
- 213.65 \*\*\* weekly containment**





O= 244.48  
 H= 249.79  
 L= 237.81  
 L= 240.67  
 Δ= -8.35

# Tesla (TSLA) - daily chart



## Support and Resistance

- 266.98 \*\*\*\* multi-wk contain UP**
- 266.22 \*\*\*\* multi-wk contain**
- 263.57 \* minor
- 261.63 \* minor
- 258.02 \* minor
- 255.77 \* session containment**
- 251.34 \* minor
- 248.14 \* minor
- 246.18 \* intra-day containment
- 244.48 \* minor
- 242.94 \* minor
- 240.67 \* minor
- 236.61 \*\*\*\* multi-week contain**
- 234.08 \* minor
- 230.09 \* minor
- 227.20 \* minor
- 223.43 \* session containment**
- 219.41 \* minor
- 216.27 \* minor
- 213.65 \*\*\* weekly containment**

