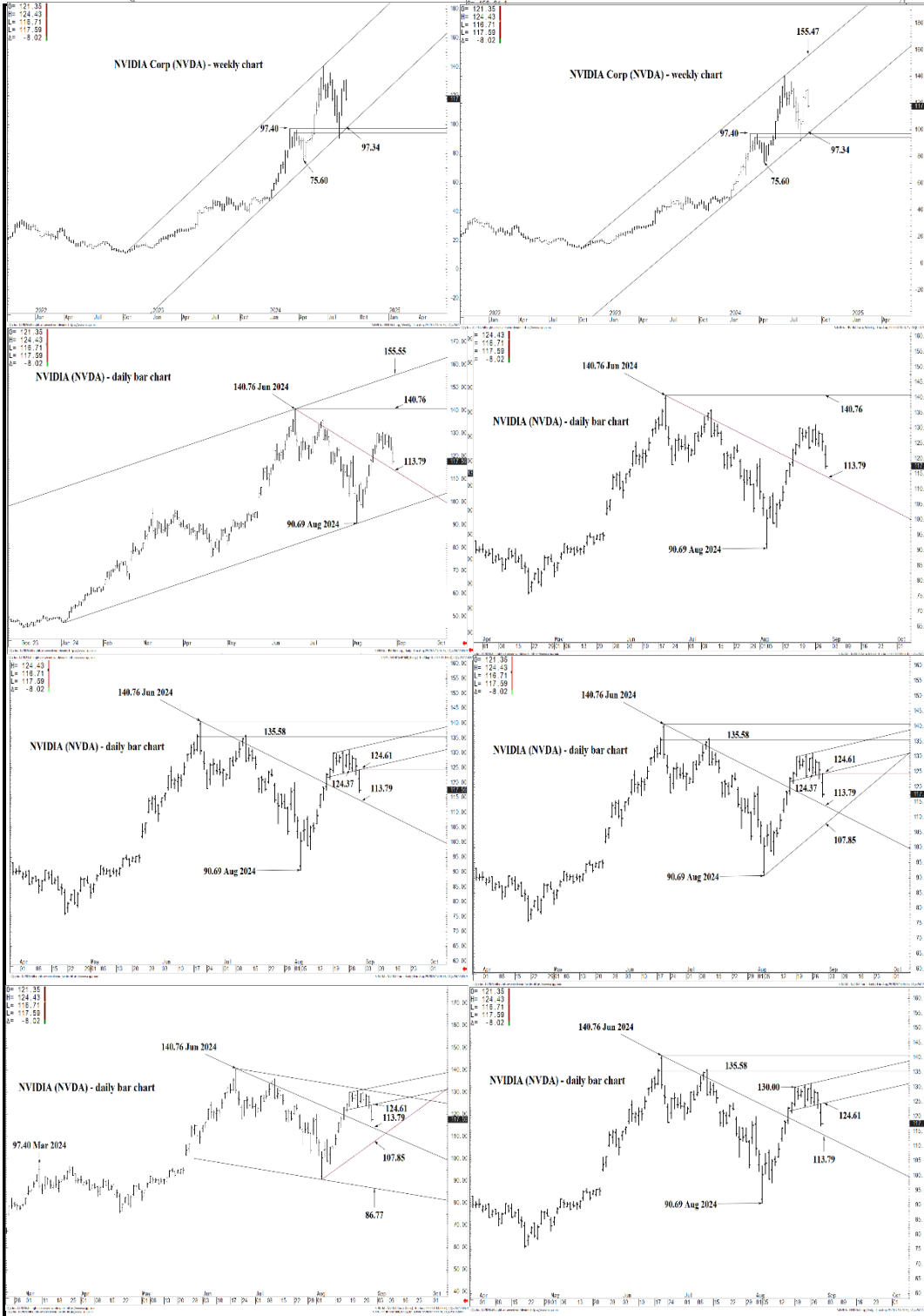




WICKED STOCKS

DIRECTIONAL CLARITY FOR THE ACTIVE INVESTOR

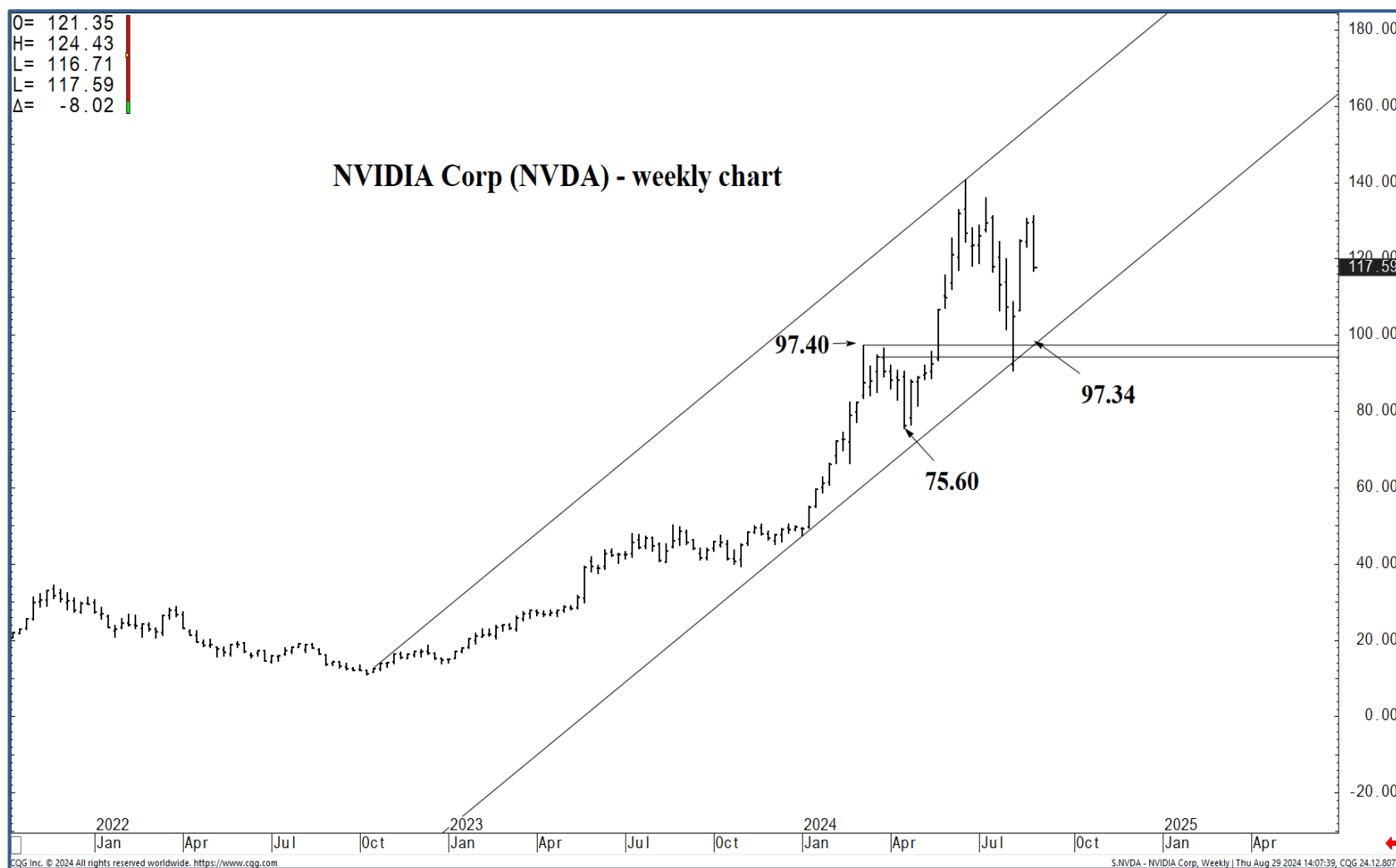


Support and Resistance

- 140.76 *** weekly containment**
- 138.40 * minor
- 136.33 * minor
- 135.58 * intra-day containment
- 134.73 * minor
- 131.92 * minor
- 130.00 * session containment UP**
- 129.20 * minor
- 128.67 * minor
- 127.47 * minor
- 125.70 * minor
- 124.61 * session containment DP**
- 122.27 * minor
- 121.36 * minor
- 120.16 * intra-day containment
- 118.83 * minor
- 117.75 * minor
- 115.76 * minor
- 113.79 **** multi-wk contain UP**
- 110.98 * minor
- 109.02 * minor
- 107.85 **** multi-wk contain DP**

O= 121.35
 H= 124.43
 L= 116.71
 C= 117.59
 Δ= -8.02

NVIDIA Corp (NVDA) - weekly chart



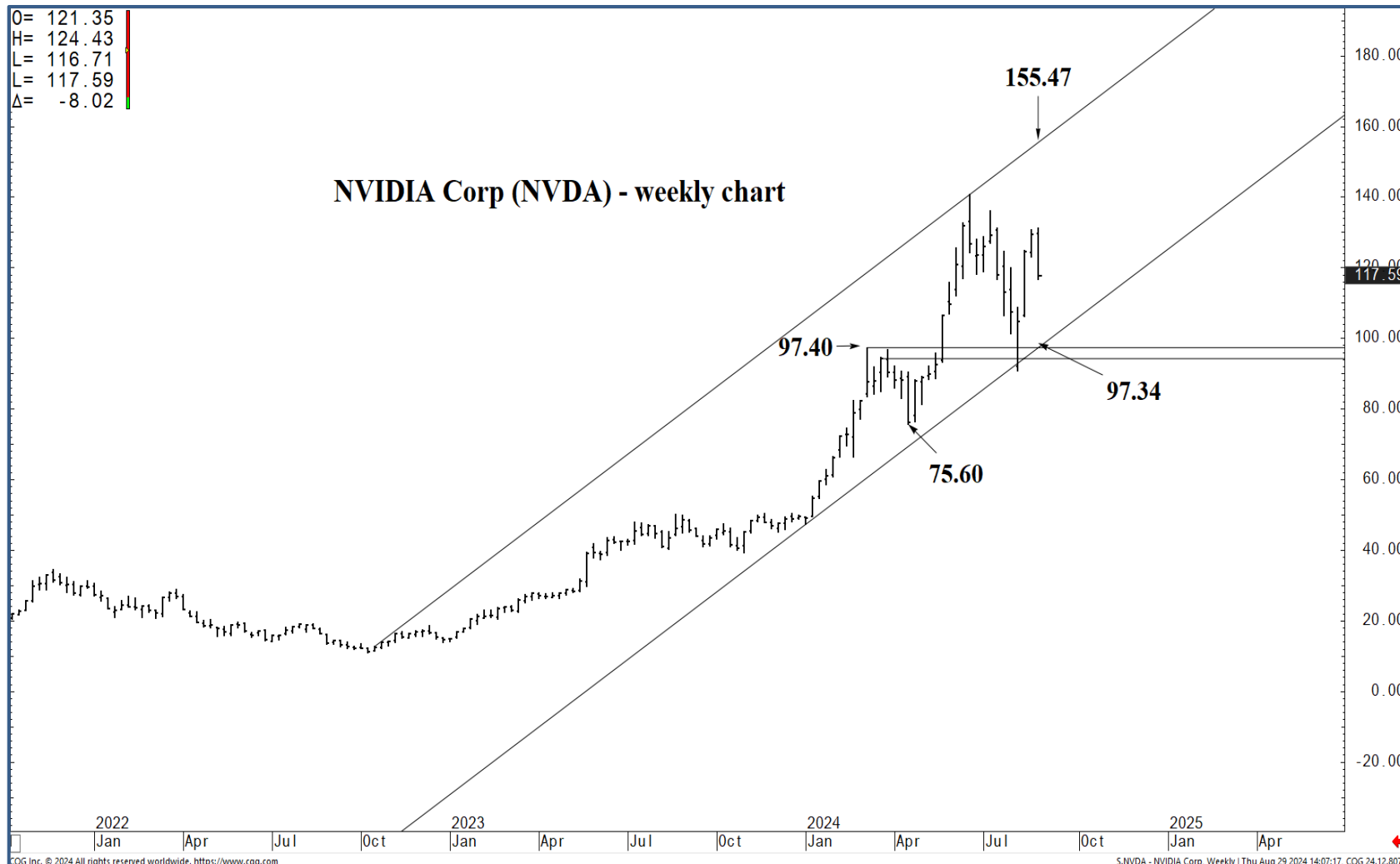
Support and Resistance

- 140.76 *** weekly containment**
- 138.40 * minor
- 136.33 * minor
- 135.58 * intra-day containment
- 134.73 * minor
- 131.92 * minor
- 130.00 * session containment UP**
- 129.20 * minor
- 128.67 * minor
- 127.47 * minor
- 125.70 * minor
- 124.61 * session containment DP**
- 122.27 * minor
- 121.36 * minor
- 120.16 * intra-day containment
- 118.83 * minor
- 117.75 * minor
- 115.76 * minor
- 113.79 **** multi-wk contain UP**
- 110.98 * minor
- 109.02 * minor
- 107.85 **** multi-wk contain DP**



O= 121.35
 H= 124.43
 L= 116.71
 C= 117.59
 Δ= -8.02

NVIDIA Corp (NVDA) - weekly chart



Support and Resistance

- 140.76 *** weekly containment**
- 138.40 * minor
- 136.33 * minor
- 135.58 * intra-day containment
- 134.73 * minor
- 131.92 * minor
- 130.00 * session containment UP**
- 129.20 * minor
- 128.67 * minor
- 127.47 * minor
- 125.70 * minor
- 124.61 * session containment DP**
- 122.27 * minor
- 121.36 * minor
- 120.16 * intra-day containment
- 118.83 * minor
- 117.75 * minor
- 115.76 * minor
- 113.79 **** multi-wk contain UP**
- 110.98 * minor
- 109.02 * minor
- 107.85 **** multi-wk contain DP**



O= 121.35
 H= 124.43
 L= 116.71
 Δ= -8.02

NVIDIA (NVDA) - daily bar chart



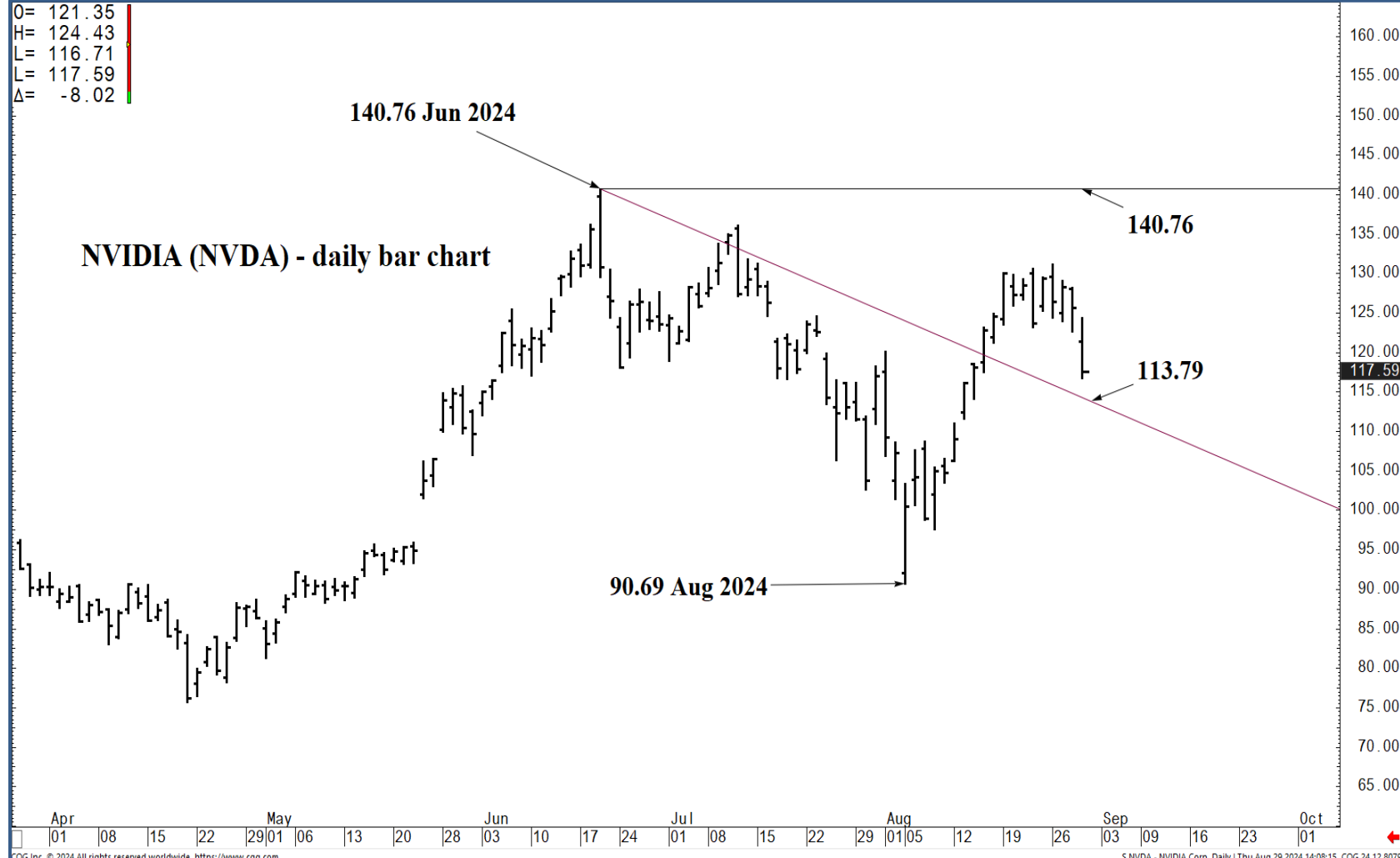
Support and Resistance

- 140.76 *** weekly containment**
- 138.40 * minor
- 136.33 * minor
- 135.58 * intra-day containment
- 134.73 * minor
- 131.92 * minor
- 130.00 * session containment UP**
- 129.20 * minor
- 128.67 * minor
- 127.47 * minor
- 125.70 * minor
- 124.61 * session containment DP**
- 122.27 * minor
- 121.36 * minor
- 120.16 * intra-day containment
- 118.83 * minor
- 117.75 * minor
- 115.76 * minor
- 113.79 **** multi-wk contain UP**
- 110.98 * minor
- 109.02 * minor
- 107.85 **** multi-wk contain DP**



O= 121.35
 H= 124.43
 L= 116.71
 L= 117.59
 Δ= -8.02

NVIDIA (NVDA) - daily bar chart



Support and Resistance

- 140.76 *** weekly containment**
- 138.40 * minor
- 136.33 * minor
- 135.58 * intra-day containment
- 134.73 * minor
- 131.92 * minor
- 130.00 * session containment UP**
- 129.20 * minor
- 128.67 * minor
- 127.47 * minor
- 125.70 * minor
- 124.61 * session containment DP**
- 122.27 * minor
- 121.36 * minor
- 120.16 * intra-day containment
- 118.83 * minor
- 117.75 * minor
- 115.76 * minor
- 113.79 **** multi-wk contain UP**
- 110.98 * minor
- 109.02 * minor
- 107.85 **** multi-wk contain DP**

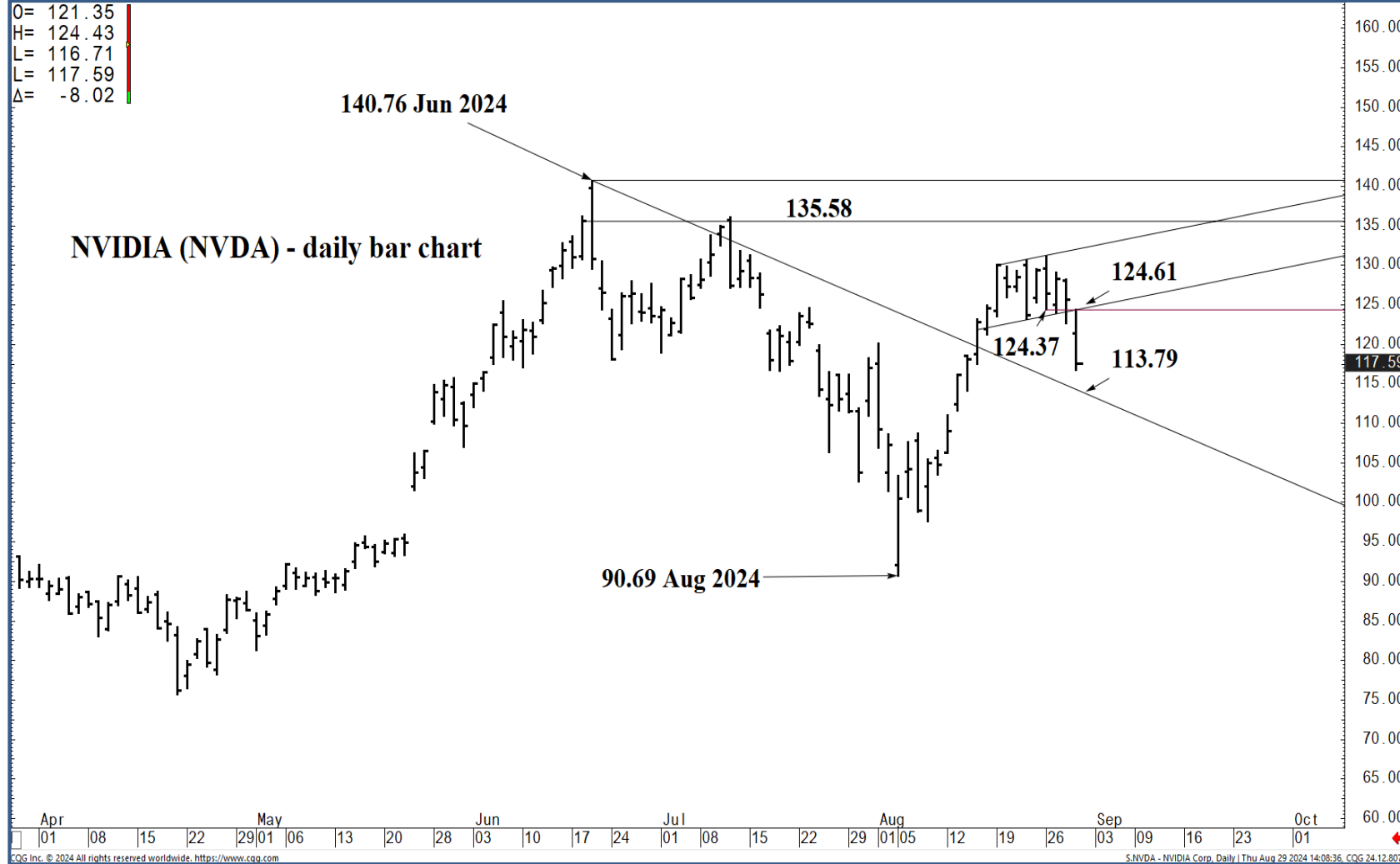
Apr 01 08 15 22 29 | May 01 06 13 20 28 | Jun 03 10 17 24 | Jul 01 08 15 22 29 | Aug 01 05 12 19 26 | Sep 03 09 16 23 | Oct 01

CGG Inc. © 2024 All rights reserved worldwide. <https://www.cgg.com> S.NVDA - NVIDIA Corp, Daily | Thu Aug 29 2024 14:08:15, CQG 24.12.8079



O= 121.35
 H= 124.43
 L= 116.71
 C= 117.59
 Δ= -8.02

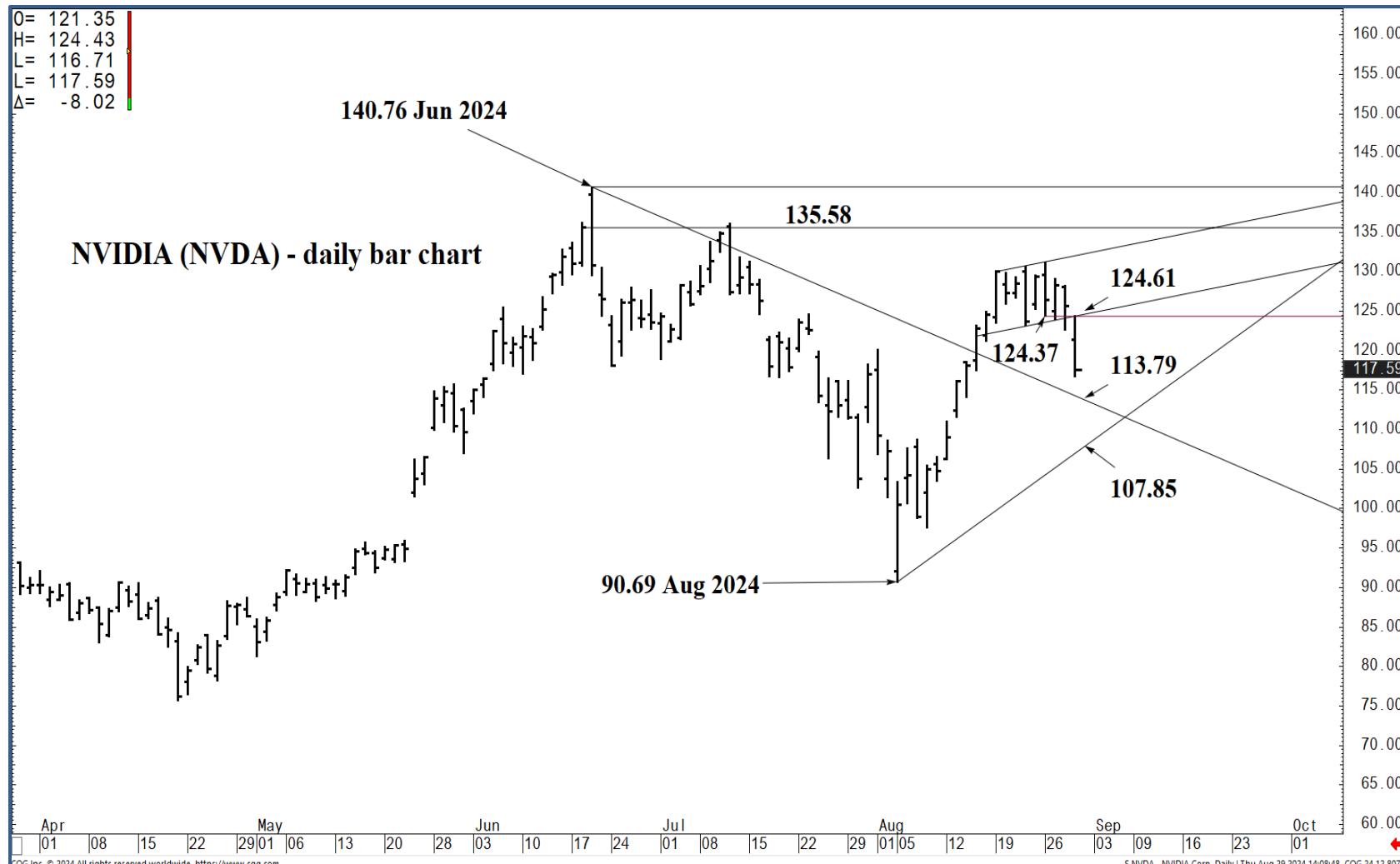
NVIDIA (NVDA) - daily bar chart



Support and Resistance

- 140.76 *** weekly containment**
- 138.40 * minor
- 136.33 * minor
- 135.58 * intra-day containment
- 134.73 * minor
- 131.92 * minor
- 130.00 * session containment UP**
- 129.20 * minor
- 128.67 * minor
- 127.47 * minor
- 125.70 * minor
- 124.61 * session containment DP**
- 122.27 * minor
- 121.36 * minor
- 120.16 * intra-day containment
- 118.83 * minor
- 117.75 * minor
- 115.76 * minor
- 113.79 **** multi-wk contain UP**
- 110.98 * minor
- 109.02 * minor
- 107.85 **** multi-wk contain DP**





Support and Resistance

140.76 *** weekly containment
138.40 * minor
136.33 * minor
135.58 * intra-day containment
134.73 * minor
131.92 * minor
130.00 * session containment UP
129.20 * minor
128.67 * minor
127.47 * minor
125.70 * minor
124.61 * session containment DP
122.27 * minor
121.36 * minor
120.16 * intra-day containment
118.83 * minor
117.75 * minor
115.76 * minor
113.79 **** multi-wk contain UP
110.98 * minor
109.02 * minor
107.85 **** multi-wk contain DP



O= 121.35
 H= 124.43
 L= 116.71
 L= 117.59
 Δ= -8.02

NVIDIA (NVDA) - daily bar chart



Support and Resistance

- 140.76 *** weekly containment**
- 138.40 * minor
- 136.33 * minor
- 135.58 * intra-day containment
- 134.73 * minor
- 131.92 * minor
- 130.00 * session containment UP**
- 129.20 * minor
- 128.67 * minor
- 127.47 * minor
- 125.70 * minor
- 124.61 * session containment DP**
- 122.27 * minor
- 121.36 * minor
- 120.16 * intra-day containment
- 118.83 * minor
- 117.75 * minor
- 115.76 * minor
- 113.79 **** multi-wk contain UP**
- 110.98 * minor
- 109.02 * minor
- 107.85 **** multi-wk contain DP**

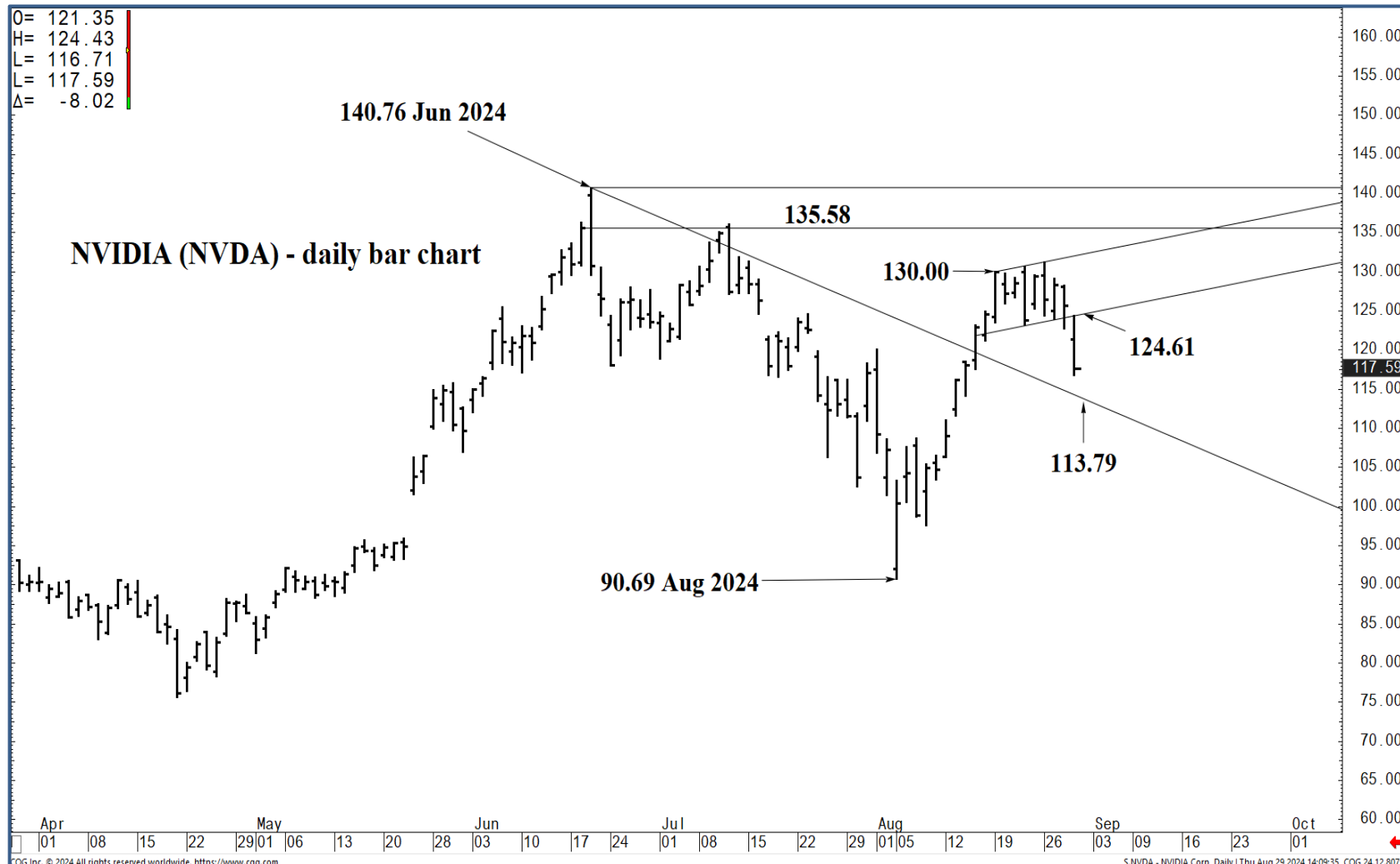
COG Inc. © 2024 All rights reserved worldwide. <https://www.cog.com>

S:NVDA - NVIDIA Corp, Daily | Thu Aug 29 2024 14:09:53, COG 24.12.8079



O= 121.35
 H= 124.43
 L= 116.71
 C= 117.59
 Δ= -8.02

NVIDIA (NVDA) - daily bar chart



Support and Resistance

- 140.76 *** weekly containment**
- 138.40 * minor
- 136.33 * minor
- 135.58 * intra-day containment
- 134.73 * minor
- 131.92 * minor
- 130.00 * session containment UP**
- 129.20 * minor
- 128.67 * minor
- 127.47 * minor
- 125.70 * minor
- 124.61 * session containment DP**
- 122.27 * minor
- 121.36 * minor
- 120.16 * intra-day containment
- 118.83 * minor
- 117.75 * minor
- 115.76 * minor
- 113.79 **** multi-wk contain UP**
- 110.98 * minor
- 109.02 * minor
- 107.85 **** multi-wk contain DP**

Apr 01 08 15 22 29 | May 06 13 20 28 | Jun 03 10 17 24 01 08 15 22 29 | Jul 05 12 19 26 03 09 16 23 01 | Oct 01

CGI Inc. © 2024 All rights reserved worldwide. <https://www.cqg.com> S.NVDA - NVIDIA Corp, Daily | Thu Aug 29 2024 14:09:35, CQG 24-12-8078

