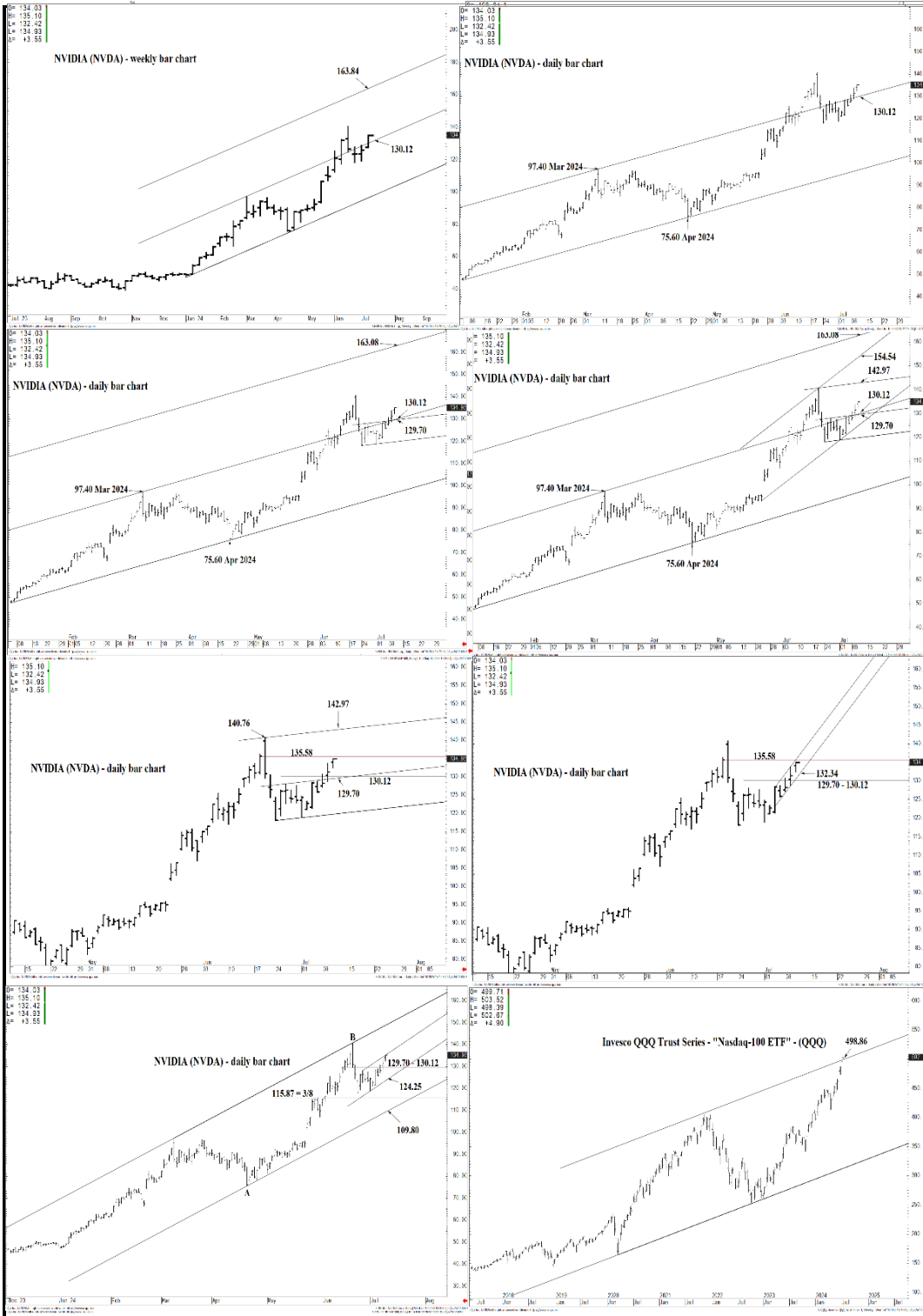




# WICKED STOCKS

DIRECTIONAL CLARITY FOR THE ACTIVE INVESTOR



## Support and Resistance

- 142.97** \* session containment
- 140.76 \* minor
- 137.58 \* minor
- 135.58 \* intra-day containment
- 133.73 \* minor
- 132.34 \* intra-day containment
- 131.59 \* minor

- 130.12** \*\*\*\* multi-wk contain UP
- 129.70** \*\*\*\* multi-wk contain DP

- 128.75 \* minor
- 128.17 \* minor
- 126.40 \* minor

- 124.25** \* session containment

- 121.36 \* minor
- 119.18 \* intra-day containment
- 117.00 \* minor

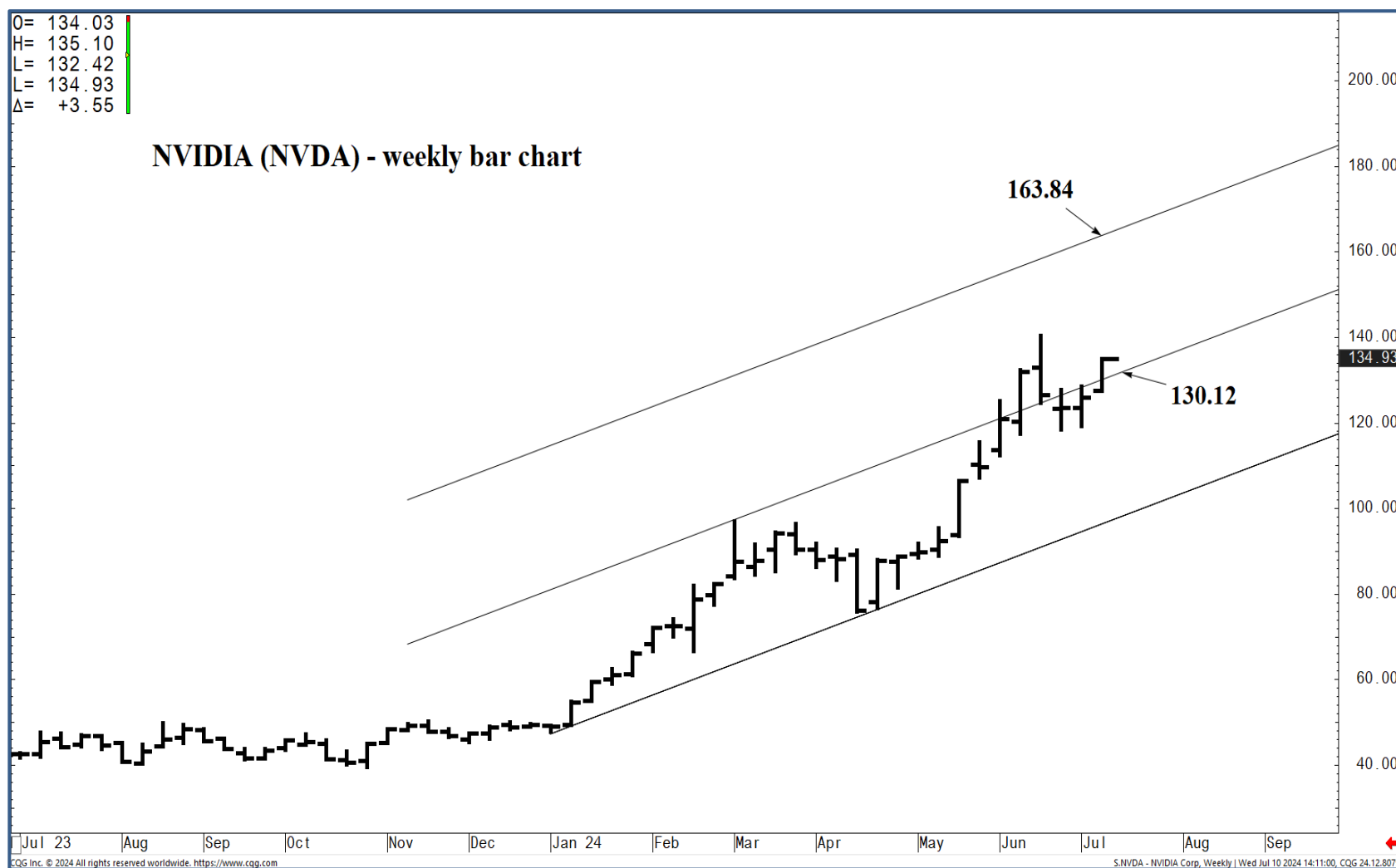
- 115.87** \* session containment

- 114.04 \* minor
- 112.71 \* minor

- 109.80** \*\*\*\* multi-week contain
- 108.18** \*\*\*\* multi-week contain

O= 134.03  
 H= 135.10  
 L= 132.42  
 L= 134.93  
 Δ= +3.55

## NVIDIA (NVDA) - weekly bar chart



### Support and Resistance

- 142.97 \* session containment**
- 140.76 \* minor
- 137.58 \* minor
- 135.58 \* intra-day containment
- 133.73 \* minor
- 132.34 \* intra-day containment
- 131.59 \* minor
- 130.12 \*\*\*\* multi-wk contain UP**
- 129.70 \*\*\*\* multi-wk contain DP**
- 128.75 \* minor
- 128.17 \* minor
- 126.40 \* minor
- 124.25 \* session containment**
- 121.36 \* minor
- 119.18 \* intra-day containment
- 117.00 \* minor
- 115.87 \* session containment**
- 114.04 \* minor
- 112.71 \* minor
- 109.80 \*\*\*\* multi-week contain**
- 108.18 \*\*\*\* multi-week contain**

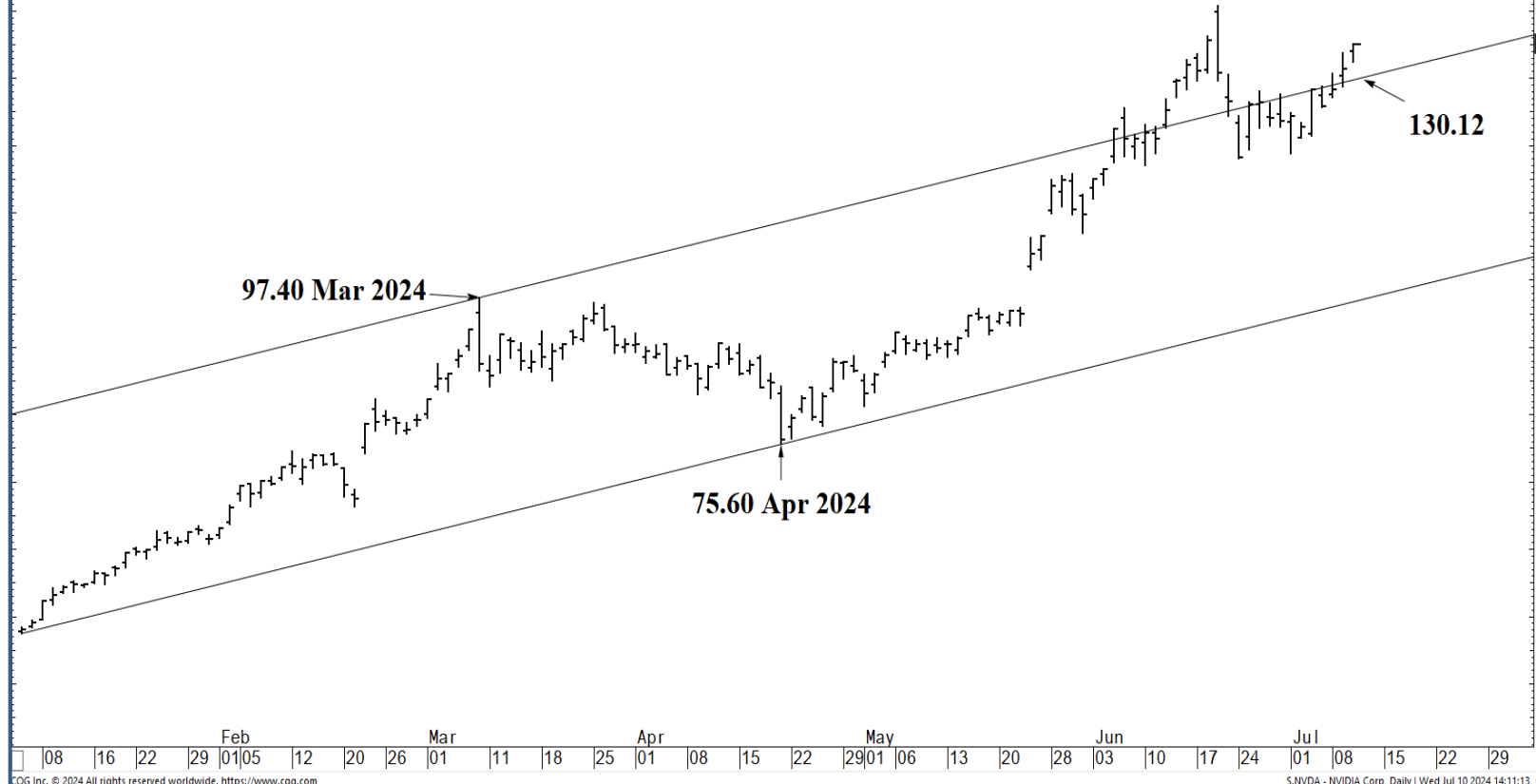
Jul 23 | Aug | Sep | Oct | Nov | Dec | Jan 24 | Feb | Mar | Apr | May | Jun | Jul | Aug | Sep

CGG Inc. © 2024 All rights reserved worldwide. <https://www.cgg.com> S.NVDA - NVIDIA Corp, Weekly | Wed Jul 10 2024 14:11:00, CGG 24-12-8073



O= 134.03  
 H= 135.10  
 L= 132.42  
 L= 134.93  
 Δ= +3.55

# NVIDIA (NVDA) - daily bar chart



## Support and Resistance

- 142.97** \* session containment
- 140.76 \* minor
- 137.58 \* minor
- 135.58 \* intra-day containment
- 133.73 \* minor
- 132.34 \* intra-day containment
- 131.59 \* minor
- 130.12** \*\*\*\* multi-wk contain UP
- 129.70** \*\*\*\* multi-wk contain DP
- 128.75 \* minor
- 128.17 \* minor
- 126.40 \* minor
- 124.25** \* session containment
- 121.36 \* minor
- 119.18 \* intra-day containment
- 117.00 \* minor
- 115.87** \* session containment
- 114.04 \* minor
- 112.71 \* minor
- 109.80** \*\*\*\* multi-week contain
- 108.18** \*\*\*\* multi-week contain



O= 134.03  
 H= 135.10  
 L= 132.42  
 L= 134.93  
 Δ= +3.55

**NVIDIA (NVDA) - daily bar chart**



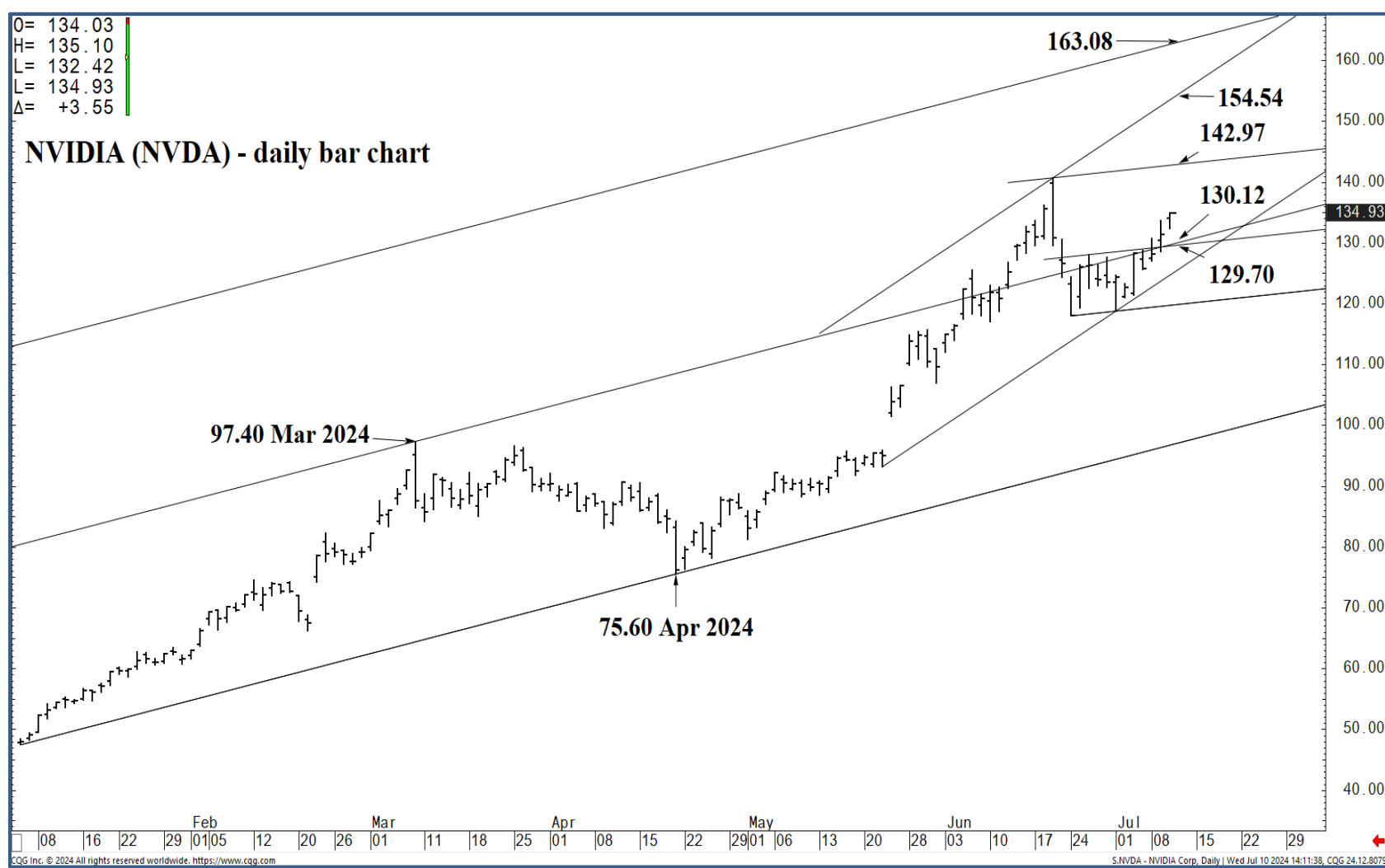
**Support and Resistance**

- 142.97 \* session containment**
- 140.76 \* minor
- 137.58 \* minor
- 135.58 \* intra-day containment
- 133.73 \* minor
- 132.34 \* intra-day containment
- 131.59 \* minor
  
- 130.12 \*\*\*\* multi-wk contain UP**
- 129.70 \*\*\*\* multi-wk contain DP**
- 128.75 \* minor
- 128.17 \* minor
- 126.40 \* minor
  
- 124.25 \* session containment**
- 121.36 \* minor
- 119.18 \* intra-day containment
- 117.00 \* minor
  
- 115.87 \* session containment**
- 114.04 \* minor
- 112.71 \* minor
  
- 109.80 \*\*\*\* multi-week contain**
- 108.18 \*\*\*\* multi-week contain**



O= 134.03  
 H= 135.10  
 L= 132.42  
 L= 134.93  
 Δ= +3.55

# NVIDIA (NVDA) - daily bar chart



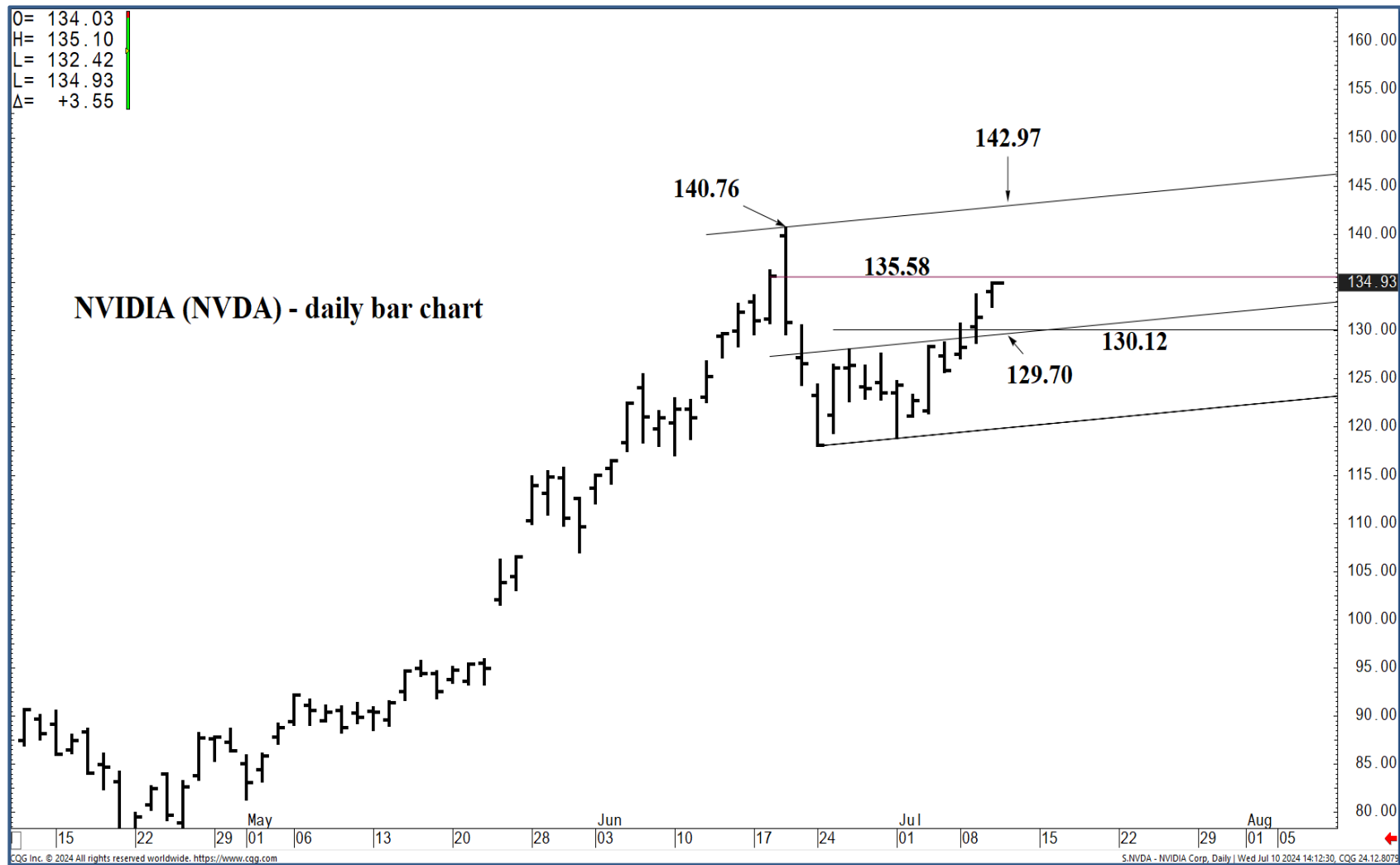
## Support and Resistance

- 142.97** \* session containment
- 140.76 \* minor
- 137.58 \* minor
- 135.58 \* intra-day containment
- 133.73 \* minor
- 132.34 \* intra-day containment
- 131.59 \* minor
  
- 130.12** \*\*\*\* multi-wk contain UP
- 129.70** \*\*\*\* multi-wk contain DP
  
- 128.75 \* minor
- 128.17 \* minor
- 126.40 \* minor
  
- 124.25** \* session containment
  
- 121.36 \* minor
- 119.18 \* intra-day containment
- 117.00 \* minor
  
- 115.87** \* session containment
  
- 114.04 \* minor
- 112.71 \* minor
  
- 109.80** \*\*\*\* multi-week contain
- 108.18** \*\*\*\* multi-week contain



O= 134.03  
 H= 135.10  
 L= 132.42  
 L= 134.93  
 Δ= +3.55

**NVIDIA (NVDA) - daily bar chart**



**Support and Resistance**

- 142.97** \* session containment
- 140.76 \* minor
- 137.58 \* minor
- 135.58 \* intra-day containment
- 133.73 \* minor
- 132.34 \* intra-day containment
- 131.59 \* minor
- 130.12** \*\*\*\* multi-wk contain UP
- 129.70** \*\*\*\* multi-wk contain DP
- 128.75 \* minor
- 128.17 \* minor
- 126.40 \* minor
- 124.25** \* session containment
- 121.36 \* minor
- 119.18 \* intra-day containment
- 117.00 \* minor
- 115.87** \* session containment
- 114.04 \* minor
- 112.71 \* minor
- 109.80** \*\*\*\* multi-week contain
- 108.18** \*\*\*\* multi-week contain



O= 134.03  
 H= 135.10  
 L= 132.42  
 C= 134.93  
 Δ= +3.55

## NVIDIA (NVDA) - daily bar chart



## Support and Resistance

- 142.97** \* session containment
- 140.76 \* minor
- 137.58 \* minor
- 135.58 \* intra-day containment
- 133.73 \* minor
- 132.34 \* intra-day containment
- 131.59 \* minor
- 130.12** \*\*\*\* multi-wk contain UP
- 129.70** \*\*\*\* multi-wk contain DP
- 128.75 \* minor
- 128.17 \* minor
- 126.40 \* minor
- 124.25** \* session containment
- 121.36 \* minor
- 119.18 \* intra-day containment
- 117.00 \* minor
- 115.87** \* session containment
- 114.04 \* minor
- 112.71 \* minor
- 109.80** \*\*\*\* multi-week contain
- 108.18** \*\*\*\* multi-week contain



O= 134.03  
 H= 135.10  
 L= 132.42  
 L= 134.93  
 Δ= +3.55

**NVIDIA (NVDA) - daily bar chart**



**Support and Resistance**

- 142.97** \* session containment
- 140.76 \* minor
- 137.58 \* minor
- 135.58 \* intra-day containment
- 133.73 \* minor
- 132.34 \* intra-day containment
- 131.59 \* minor
- 130.12** \*\*\*\* multi-wk contain UP
- 129.70** \*\*\*\* multi-wk contain DP
- 128.75 \* minor
- 128.17 \* minor
- 126.40 \* minor
- 124.25** \* session containment
- 121.36 \* minor
- 119.18 \* intra-day containment
- 117.00 \* minor
- 115.87** \* session containment
- 114.04 \* minor
- 112.71 \* minor
- 109.80** \*\*\*\* multi-week contain
- 108.18** \*\*\*\* multi-week contain





O= 499.71  
 H= 503.52  
 L= 498.39  
 C= 502.67  
 Δ= +4.90

## Invesco QQQ Trust Series - "Nasdaq-100 ETF" - (QQQ)

498.86



600.00  
 550.00  
 502.67  
 450.00  
 400.00  
 350.00  
 300.00  
 250.00  
 200.00  
 150.00  
 100.00

### Support and Resistance

- 142.97 \* session containment**
- 140.76 \* minor
- 137.58 \* minor
- 135.58 \* intra-day containment
- 133.73 \* minor
- 132.34 \* intra-day containment
- 131.59 \* minor
- 130.12 \*\*\*\* multi-wk contain UP**
- 129.70 \*\*\*\* multi-wk contain DP**
- 128.75 \* minor
- 128.17 \* minor
- 126.40 \* minor
- 124.25 \* session containment**
- 121.36 \* minor
- 119.18 \* intra-day containment
- 117.00 \* minor
- 115.87 \* session containment**
- 114.04 \* minor
- 112.71 \* minor
- 109.80 \*\*\*\* multi-week contain**
- 108.18 \*\*\*\* multi-week contain**

